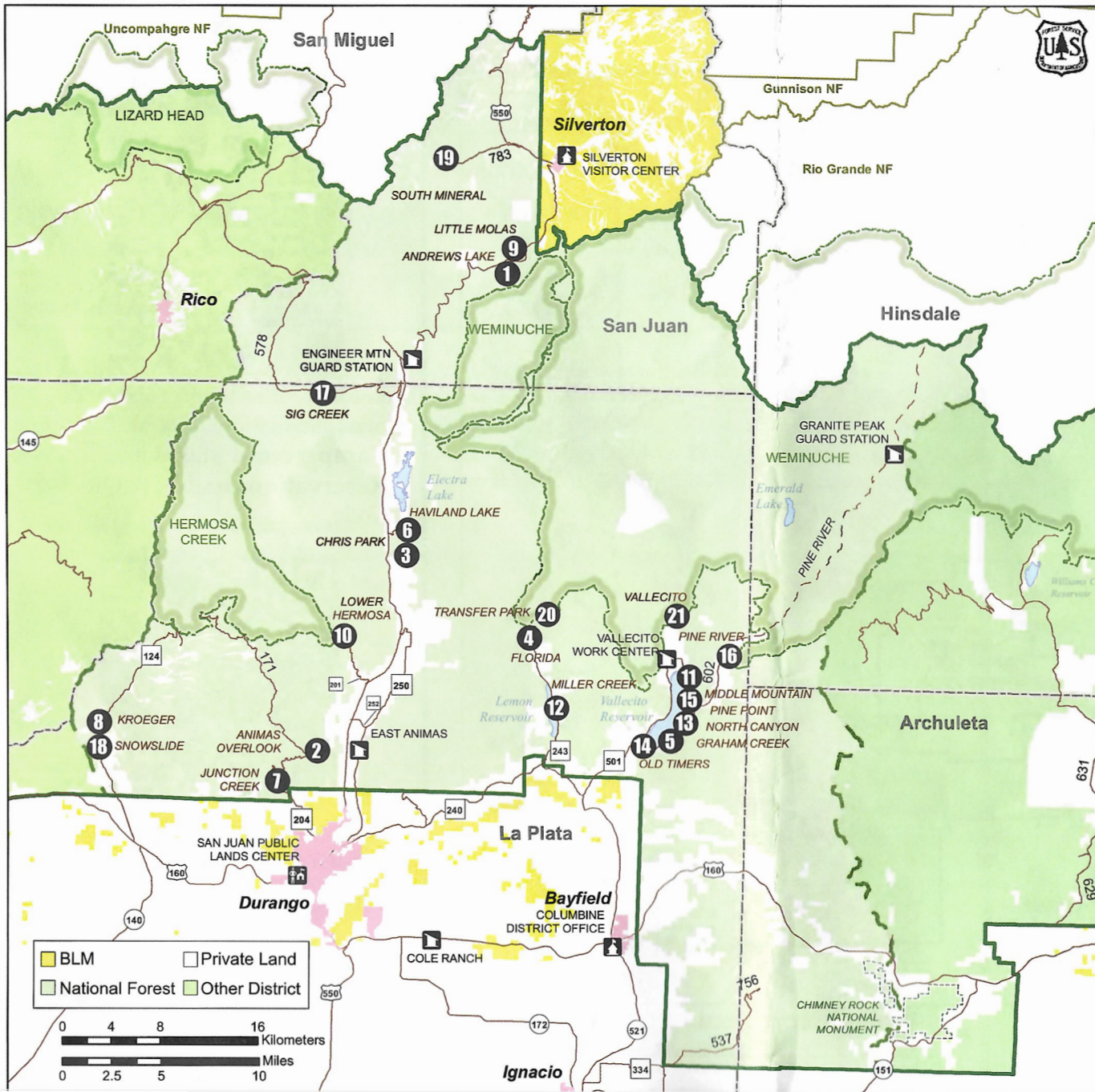


Columbine

Public Lands Campgrounds & Day Use Areas

Questions? Call the Columbine Ranger District: 970-884-2512 or 970-247-4874



Be Careful with Fire

Southwestern Colorado may look lush and green, but this is arid country that can be dangerously dry in summer or fall. Be careful with fire – a spark, a puff of wind and nearby flammable materials can combine to cause disaster before you know it.

- If there are current fire restrictions, as a public notice, they will be posted at campground entrances, Forest entrance signs and trailheads. Check with campground hosts or with district offices.
- In campgrounds, campfires are allowed only within a fire grate, and firewood must fit inside the metal ring.
- If camping in the backcountry, don't build new fire rings/fire pits - use a camp stove or an existing fire ring/fire pit. Fire rings/fire pits scar the scenery and sterilize the soil beneath. Don't build a fire beneath overhanging branches.
- Regulations require fires be put out completely every time you leave camp or go to bed. Pour water over ashes and stir until cold. Stir wet ashes until there is no smoke or heat.
- Do not burn trash. Some items are harmful to the environment. Plastics and tin will not burn to ash, and the resulting debris is messy and difficult to clean up.
- Do not park hot vehicles over dry grass.
- Never toss cigarette butts - extinguish and dispose of safely.

Map	Name	Location	Elev.	Camp Sites	Group Sites	Picnic Sites	Reserve Sites	RV Size	Services
1	Andrews Lake	37 mi. N of Durango	10,800'			4			
2	Animas Overlook	11 mi. N of Durango	9000'			4			
3	Chris Park	18 mi. N of Durango	7900'		3		3	50'	
4	Florida	22 mi. NE of Durango	8300'	20	1		1	25'	
5	Graham Creek	18 mi. N of Bayfield	7700'	24			15	35'	
6	Haviland Lake	18 mi. N of Durango	8100'	41		5	26	45'	
7	Junction Creek	5 mi. NW of Durango	7300'	46	2 (1 day use + 1 overnight)	1 group + indiv.	29	60'	
8	Kroeger	18 mi. NW of Durango	8900'	10				25'	
9	Little Molas	4 mi. SW of Silverton	10,900'	10				35'	
10	Lower Hermosa	14 mi. NW of Durango	7700'	19				30'	
11	Middle Mountain	23 mi. N of Bayfield	7700'	24				35'	
12	Miller Creek	18 mi. NE of Durango	8200'	12		4		45'	
13	North Canyon	19 mi. NW of Bayfield	7700'	21			12	40'	
14	Old Timers	16 mi. N of Bayfield	7700'			10			
15	Pine Point	20 mi. N of Bayfield	7700'	28			15	40'	
16	Pine River	27 mi. N of Bayfield	8100'	6				16'	
17	Sig Creek	32 mi. N of Durango	9200'	9				25'	
18	Snowslide	18 mi. NW of Durango	8800'	13				35'	
19	South Mineral	7 mi. W of Silverton	9800'	26				35'	
20	Transfer Park	23 mi. NE of Durango	8500'	25				35'	
21	Vallecito	22 mi. N of Bayfield	7900'	79		7	36	45'	

Symbols Used in this Guide:

- Campground
- Fees Charged
- Electricity
- Horse Corral
- Picnic Area
- Drinking Water
- Rafting
- RV Dump Station
- Group Camping
- Fishing
- Trailhead
- Restrooms
- Barrier-Free
- Boat Launch
- Horse Staging Area